

DATA SHEET

Proximity Switch UNI-11/UNI-11P – product number E62603/E62604



Product characteristic

A non-contact switch (motion sensor) is used for contactless switching on and off and adjusting the brightness of LED lighting in linear lighting fixtures – Kluś profiles. The non-contact switch works like an active reflective photocell. The device cyclically sends a series of infrared pulses and measures the strength of the reflected signal. If you move your hand close enough to the sensor, the infrared light will hit it and bounce back to the sensor. If the reflected signal is strong enough, the switch will turn the light source on or off. The implemented switch has a soft start and a soft stop, which reduces the glare effect when turning on the light. Due to the fact that infrared light is emitted at a specific frequency, the switch is resistant to signals from other light sources such as lamps or the sun. The switch is equipped with a tape glued to the bottom for stable attachment and additional cooling of the switch mounted in the profile.

Brightness adjustment – after turning on the light, cover the switch again and hold it until the brightness is reduced or increased. When the maximum or minimum light level is reached, the fixture with the switch fitted in it will flash three times quickly. The system remembers the last setting of the brightness level after power failure.

Manual reset – cover the switch during standby mode (the LEDs in the fitting are off) until the fitting flashes. After the flashing, the informational system recalibrates.

Caution

- * We do not recommend installing the proximity switch above the stove top. Hot air can trigger the sensor.
- * We do not recommend installing the proximity switch near curtains. Drafts of air can move the curtain and as a result trigger the sensor.
- * Do not bend the base of proximity switch as it may damage the device.
- * Switching the main power on/off will cause the lit LED fixtures operated by the proximity switch to be turned “off”.

Applications

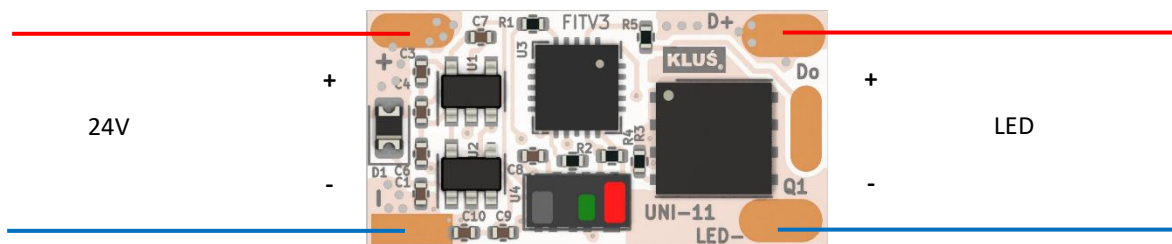
The Proximity switch is dedicated for applications that require very high hygiene standards such as: laboratories, hospital operating rooms. The switch guarantees safety while turning the light on in the bathroom with wet hands or any other application where you may not physically want to touch the switch. The switch provides comfort for example while working in the kitchen as it allows for quick and secure triggering of lighting during work, often with having unwashed hands.

www.KlusDesign.eu
Creative LED solutions. Get inspired

Technical specification

Function	switch on/off/dimmer
Voltage	12 - 24V
Maximum Current	6A, 72W/12V; 144W/24V
Standby Power Consumption	0,02W/12V; 0,04W/24V
Dimensions	22 mm x 11 mm x 2 mm
Detection distance depending on the cover type	3 - 8 cm
Operational temperature range	-20°C ... +55°C
Ready to work	5 seconds after power on

Connection scheme



Calibration instructions

The switch features automatic calibration of operating parameters.

- Calibration is performed automatically each time the supply voltage is applied.
- Automatic calibration after inserting the diffuser with the supply voltage already on.
- Manual calibration by covering the switch with your hand until signaling (three long flashes).
- The system will inform you about the correct calibration with one or three flashes.

Recommendations:

For deep profiles above 18mm, the use of MW 11x5 washer (C24511A) is recommended to increase the sensitivity of the switch.

*We reserve the right to change and modify our products.

www.KlusDesign.eu
Creative LED solutions. Get inspired

