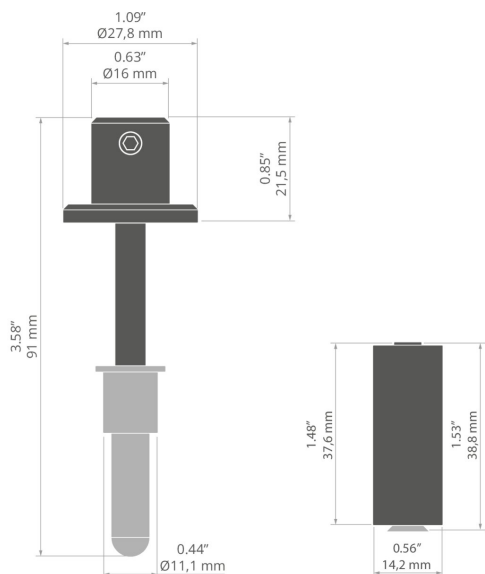


Fastener set PUSZ-MR-1

Ref. C28132



TECHNICAL DRAWING



- Completed set of items
- Longitudinal suspension on a rod or wire
- Single pole conductivity possible
- High lifting capacity

APPLICATION

- for suspending LED lighting fixtures

MOUNTING

- to the surface, using the included accessory kit
- to the lighting fixture, using a countersunk screw (included)
- to a rod or cable, using a set bolt

TECHNICAL SPECIFICATIONS

Material	stainless steel, aluminum
IP protection rating	20
Corrosion resistance	yes
Conducting electricity	yes
UV radiation resistance	yes
Working temperature	54°C
Lifting capacity	20 kg
Maximum current	10 A
Loss of voltage	0.1 V

Color	Ref
<input type="checkbox"/> white lacquered	C28132L07
<input checked="" type="checkbox"/> black lacquered	C28132L10
<input type="checkbox"/> silver	C28132N00

RELATED PROFILES > ARCHITECTURAL



GIZA
A05556

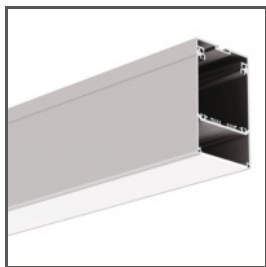


GLAZA-LL
A02627



REGULOR
A18068

RELATED PROFILES > FOR MAIN LIGHTING

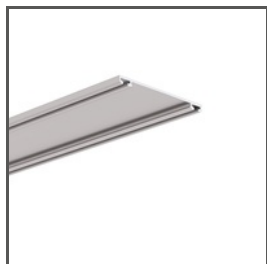


GLADES
A18036

RELATED PROFILES > MOUNTING TRACKS



TEST-36
A06639



TETRA-43
A04478



TETRA-78
A04508

RELATED PROFILES > UNIVERSAL



PDS-4-PLUS
A01263



SILER
A09325



TAMI
A05390



TAPO
A01919

RELATED ACCESSORIES > OTHER RELATED ACCESSORIES > WIRES AND RODS



WIRE
CU FI 0,95 mm
Z70240



ROD
PUSZ-ALU
C28272A, C28272A07